

Function Introduction

Lonqi New Energy Technology has developed LONQ-40 DC series new energy disconnect switches through years of dedicated research on the operation of new energy systems at home and abroad and the needs of customers.

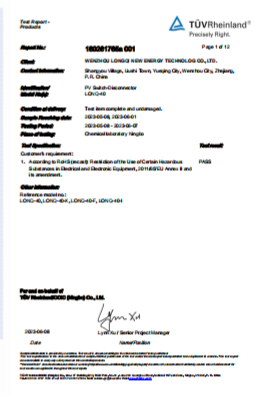
Product Features

- Quickly isolate circuits to ensure the safety of electricity consumption.
- Maximum rated voltage DC 1500V, maximum current 40A.
- Adapts to 35mm rails for quick mounting.
- Thickened copper parts and silver-plated contacts, low heat generation and long service life.
- PA Shell, Flame Retardant Rating UL94V-0

Model Name Meaning



Certification



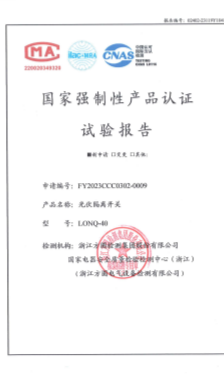
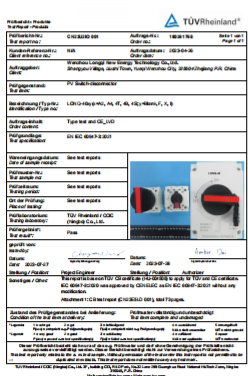
EU IPO

TUV

CB

UKCA

ROHS



CE

AZ

CCC

GTS

Patent

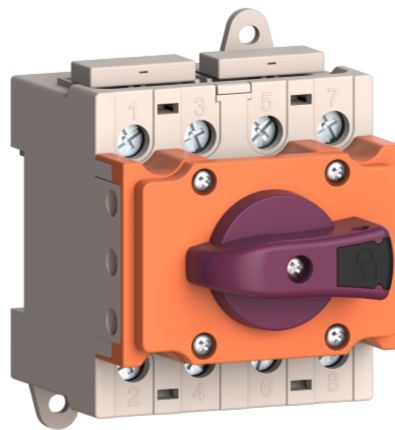
Tip:

Please disconnect the power supply when installing the wiring, it is better to ask professional electricians to install.

Main Technical Parameter



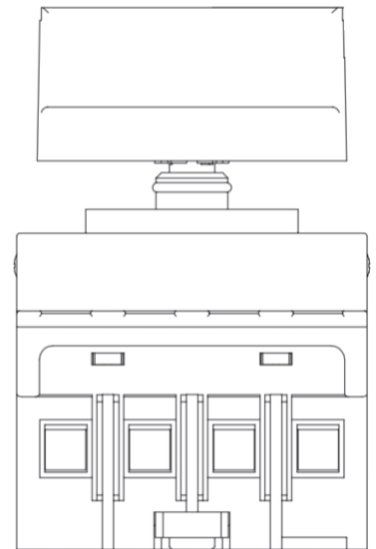
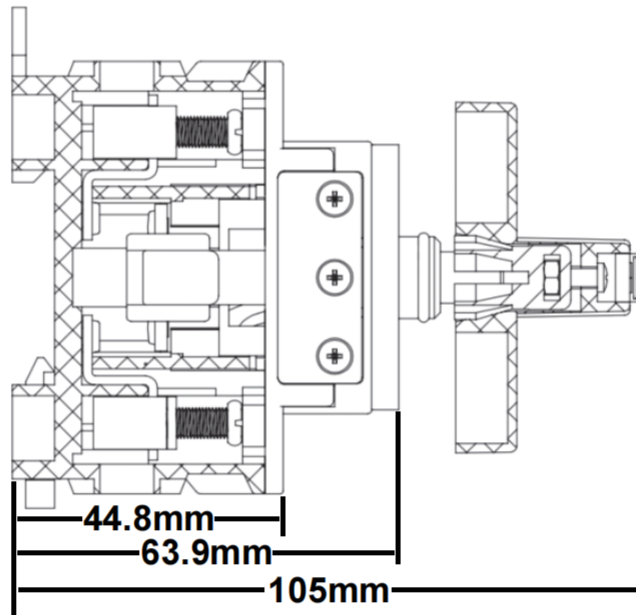
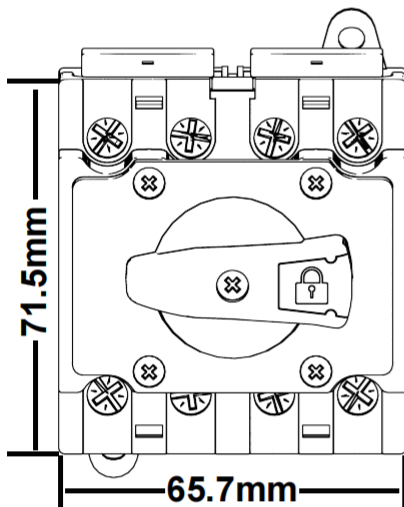
LONQ-40.X



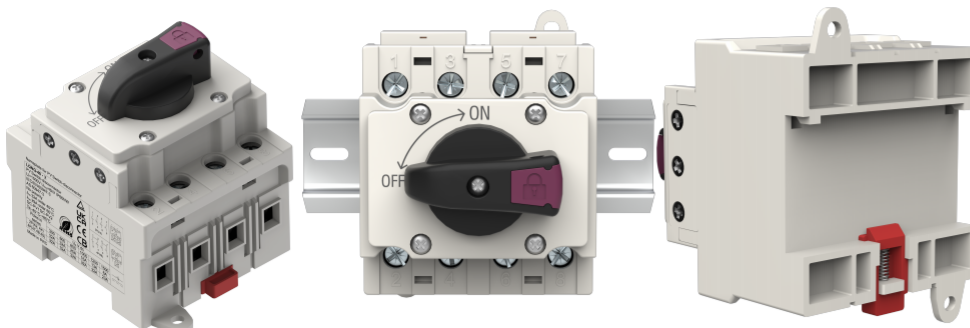
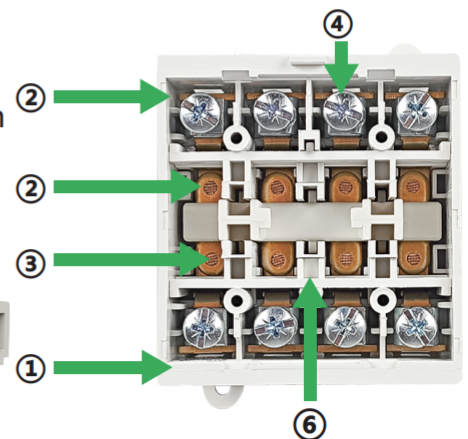
LONQ-40.I



LONQ-40.F



- ①PA Housing:UL94V-0 flame retardant grade
- ②Thick Copper Conductor:Low resistance and low heat generation
- ③Silver Plated Contacts:Anti-oxidation
- ④Corrosion Resistant Screws:Salt Spray Tested
- ⑤Magnet:Fast arc extinguishing

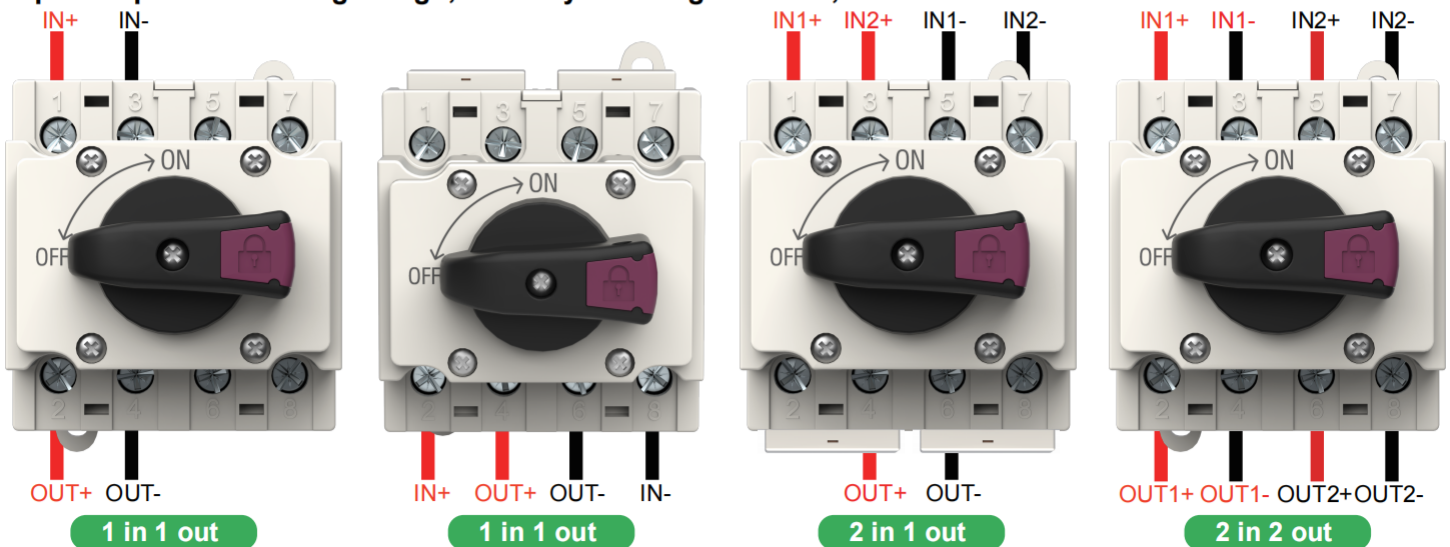


Product Details

Technical Data						
Model	LONQ-40.X		LONQ-40.I		LONQ-40.F	
Type	PV DC Disconnect Isolator Switch					
String	2 in 2 out or 2 in 1 out or 1 in 1 out or 1 in 2 out					
Rated Current In(A)	32	32	32	32	32	23
Rated Working Voltage Ue (V)	300	600	800	1000	1200	1500
Rated Insulation Voltage Ui (V)	1500V					
Pole	4P					
Rated Impulse Withstand Voltage Uimp (kV)	8					
Short-Time Withstand Current Icw (kA)	1					
Wiring Method	Non-polarized					
Standard	IEC/EN60947-3 GB/T 14048.3					
Insolation Feature	Yes					
Flame Retardant Grade	UL94V-0					
Housing Material	PA					
Conductor Material	Silver Plated Copper					
Quality Certificate	TUV、CE、CB、UKCA、AZ、CCC、ISO9001、ROHS					
Mechanical Life (times)	20000					
Electrical Life (times)	6000					
Knob Positions	OFF at 9 hr , ON at 12 hr					
Operating Temperature	-40℃ to +85℃					
Humidity	≤95%					
Altitude	2000m					
Installation	35mm DIN Rail					
Packaging Details	1Pcs per inner box, 50Pcs per carton					

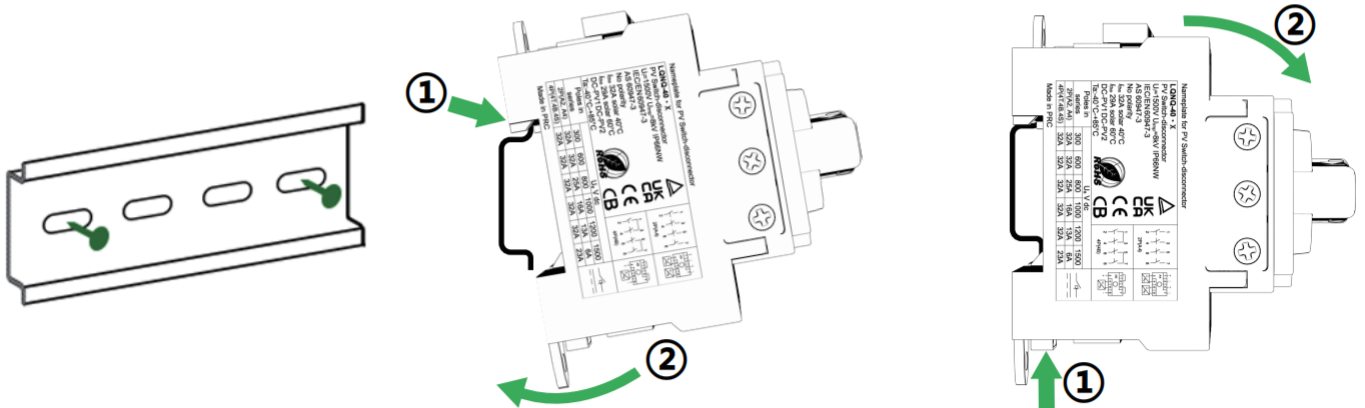
Connect Wire

Tip: Non-polarized wiring design, a variety of wiring methods, more connection methods can contact us!



Contact Wiring Diagram			
Connect Method Code	Circuit Type	Wiring Diagram	Load Diagram
2P(A2)	2 poles in series for one string, 1 load		
2P(A4)	2 poles in series for one string, total 2 loads		
4P(4T)	4 poles in series, for one string		
4P(4B)	4 poles in series, for one string		
4P(4S)	4 poles in series, for one string		

35mm DIN Rail Installation and Removal



DIN Rail

Install the 35mm DIN rail horizontally in a stable environment

Installation

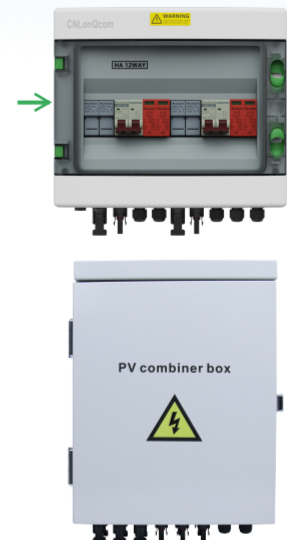
- ①. Hang the disconnect switch on the DIN rail
- ②. Push the lower end of the disconnect switch into the DIN rail

Dismounting

- ①. Push the switch upward
- ②. Turn the upper end of the switch out of the DIN rail

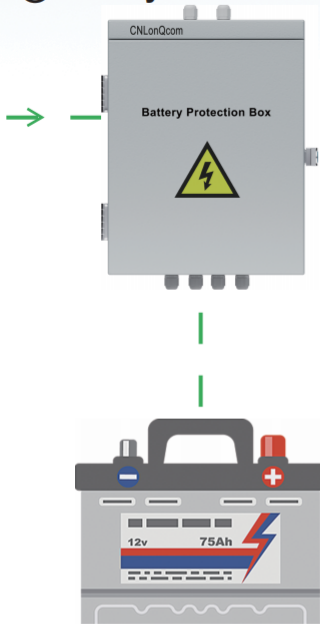
Complete Solutions for The Protection of PV Systems

① PV Connector Series ② PV Disconnect Switch ③ PV Combiner Box

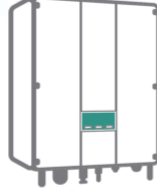


Complete Solutions for The Protection of AC Systems

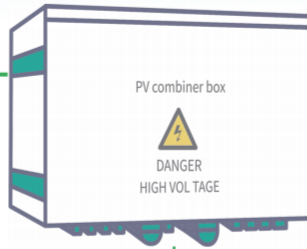
④ Battery Protection Box



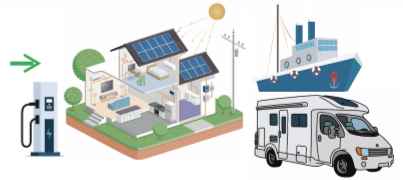
Inverter



⑤ AC Combiner Box



AC Load



Battery Pack

<p>AC MCB</p>	<p>AC MCCB</p>	<p>AC SPD</p>
<p>RCBO</p>	<p>OUPA</p>	<p>ID</p>
<p>CAM</p>	<p>ATS</p>	

WELCOME TO BECOME OUR AGENT
We will provide our agents with:

1. More favourable price
2. Exhibition/sales channels
3. Area price protection
4. OEM/ODM support
5. Technical& Accessories Support
6. Annual sales target rebate

For more DC and AC circuit protection products please contact us!



Contact phone number:

+86 133-5331-9123



Contact Email:

sales@cnlonq.com



Company Address:

No.76, Jingyou 7 Road, Upstream Industrial Zone, Liu Shi Town, Yueqing City, Wenzhou City, Zhejiang Province, China.